

Meiwa Town Comprehensive Disaster Prevention Maps

明和町総合防災マップ

~ Protect Your Own Life Yourself ~



Meiwa Town's original character, Mei-chan



Table of Contents

Disaster Prevention Information		
• Meiwa Town bird's-eye view	1 - 2	
• Being prepared and getting information / Evacuation sites	3 - 4	
Flood inundation assumption area map: Wide-area map	5 - 6	
Flood inundation assumption area map: Flood duration	7 - 8	
Disaster Prevention Information		
• Evacuation timing / My Timeline	9 - 10	
• Precautions for evacuating / Lightning and gusty winds, etc	11 - 12	
• Voluntary disaster prevention organizations / Emergency grab-and-go supplies ..	13 - 14	
• Toward restoring normal daily life / List of evacuation facilities ..	15 - 16	
Flood inundation assumption area map		
: Tone River: West	17 - 18	
: Tone River: East	19 - 20	
Flood inundation assumption area map		
: Watarase River: West	21 - 22	
: Watarase River: East	23 - 24	
Flood inundation assumption area map		
: Yata River, etc.: West	25 - 26	
: Yata River, etc.: East	27 - 28	
Disaster Prevention Information		
• Earthquake disasters	29 - 30	

Disaster Prevention Information

Flood inundation assumption area map: Wide-area map

Flood inundation assumption area map: Flood duration

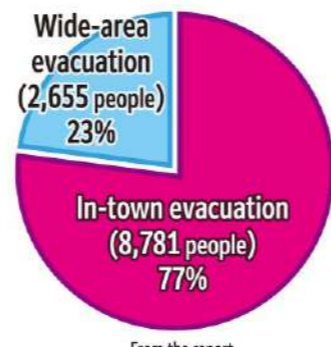
Flood inundation assumption area map: Tone River

Flood inundation assumption area map: Watarase River

Flood inundation assumption area map: Yata River, etc.

Are you prepared for a disaster?

In the “Survey on Evacuation Sites in the Event of a Flood” conducted by Meiwa Town in 2022, only a little over 20% of respondents said they would be able to evacuate to an out-of-town location, and most people were considering in-town evacuation. However, if the largest anticipated scale of flooding occurs, the prediction is that most of Meiwa Town will be inundated, and in-town evacuation facilities will also be unable to accommodate everyone who wants to evacuate to them. With storm and flood damage occurring every year in many parts of the country, how about taking another good look at your own disaster preparedness?



From the report
“Survey on Evacuation Sites in the Event of a Flood”
by Meiwa Town (February 2022)



Mayor of Meiwa Town
Motosuke Tomizuka

Natural disasters like typhoons and heavy rains have been getting increasingly severe in recent years. The town issued its first-ever evacuation order in the 2019 East Japan Typhoon, but thanks to everyone’s cooperation, serious damage was avoided. However, “self-help, mutual help, and public help” are essential for being prepared for disasters. The town’s authorities, etc. are working to secure evacuation sites and improve disaster prevention stockpiled supplies, but the most important things are for all town residents to be individually prepared, and for the whole community to help each other. Please use these comprehensive disaster prevention maps to get yourselves prepared so you can protect your own lives, and will be able take action calmly in an emergency.



Professor,
Graduate School of
Science and Technology,
Gunma University
Masanobu Kanai

Major earthquakes and storm- and flood-related disasters strike our homeland of Japan almost every year, causing suffering to many people. Meiwa Town has fortunately not suffered a major disaster so far, but that does not mean it will never do so in the future. In readiness for a major disaster, first of all, please take a look at these disaster prevention maps, and correctly understand the “potential disaster risks to your home.” What preparations people should make will depend on the scale of the anticipated damage and their own household’s circumstances. Please understand the dangers in your area, and consider “practical ways to protect yourselves” based on the situation regarding the family members living with you.



Do you remember the 2019 East Japan Typhoon (Typhoon No. 19)?

Typhoon No. 19 made landfall and crossed Japan from October 12 to 13, 2019, causing widespread damage in the eastern part of the country. For the first time ever, Meiwa Town issued an “evacuation order” and opened evacuation sites. 2,800 people—more than a quarter of the population—evacuated to these sites.



The state of things downstream of Showa Bridge on October 13

Photo provided by: Tone River Upstream Work Office.

Being prepared for evacuation and getting information

For evacuating early, gathering information is essential. Check weather and disaster prevention information from reliable sources, and act according to the situation. Also, regularly discuss disaster prevention with your family, and decide your evacuation sites, meeting points, communication methods, and so on.

Disaster preparedness

■ Discussing things with your family

Discuss with your family about what to do in a disaster, and decide in advance about things like how to stay in contact if you are separated and where to meet up and evacuate to.



■ Checking your evacuation sites and routes

Actually walk the evacuation routes in advance to check for any hazardous areas.



■ Paying attention to weather information

The path and scale of weather like typhoons and low-pressure systems accompanied by heavy rain can be forecast, so always check the weather information via the TV, radio, etc.



■ Preparing emergency grab-and-go supplies

Thoroughly prepare grab-and-go supplies in advance of a disaster. (See p. 14) Pack them all into a backpack or the like, and keep it in an easy-to-access place, such as near the front door.



■ Inspecting the inside and outside of your house

Check your own home's preparedness, e.g., unsecured items that could get blown away, damage to roofs or walls, and appropriate furniture placement.



■ Keeping storm drains and gutters in good repair

If rainwater cannot drain away smoothly, the inside of your home may get flooded as well. So, clean your storm drains and gutters in advance.



Getting disaster information

In a disaster, confusion can arise because there is lots of conflicting information from various sources circulating about. Please check and register with the information sources below, and take action based on the "latest correct information."



■ Ministry of Land, Infrastructure, Transport and Tourism's river disaster prevention information

■ Gunma Prefecture disaster prevention portal site

■ Japan Meteorological Agency Kikikuru (Risk distributions)

Yahoo! Disaster Prevention News App
An official Yahoo! app that sends push notifications about earthquakes, heavy rain, etc. before disasters occur



iPhone



Android

NHK ONE News and Disaster Prevention App
An official NHK app. Check rain cloud, typhoon, and river information on maps, and get emergency information via push notifications



iPhone



Android

Safety tips(A disaster information app for foreign tourists)
An app supervised by the Japan Tourism Agency that provides disaster notifications in 15 languages



iPhone



Android

Meiwa notification email ~Besides disaster prevention, it provides information about the local area, too!

A free service that delivers disaster- and crime-prevention information to registered smartphones and cell phones. Scan the QR code on the right and follow the instructions on the registration page.



For smartphones



For cell phones

Disaster prevention administrative radio system

The town has set up a disaster prevention administrative radio system to give residents urgent information on things like disaster- and crime-prevention.

Telephone Service

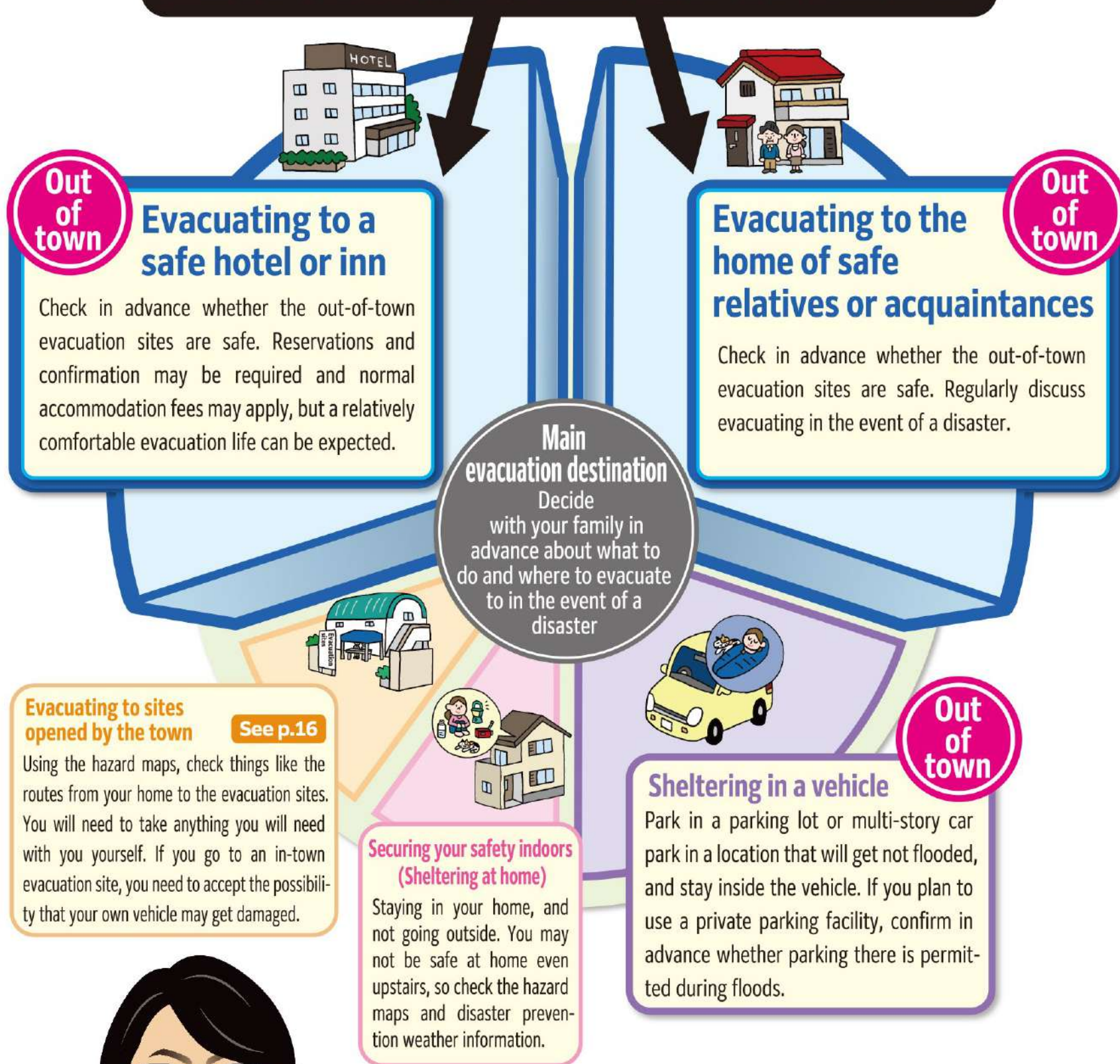
TEL:0276-84-1000

If the disaster prevention administrative radio system is difficult to hear, dial the phone number above to hear the most recent broadcast.

Where should you evacuate to?

As shown on the following page, if flooding occurs in Meiwa Town, the whole town may get inundated to a depth of over 3 m (above second-floor level), and the flooding may persist for several days to around one week. Therefore, we recommend **“wide-area evacuation to an out-of-town location”** at an early stage.

Meiwa Town recommends these two measures



Professor Kanai,
Graduate School of
Science and Technology,
Gunma University

Evacuating during storms and floods

~There are various points to keep in mind for evacuating due to storms and floods~

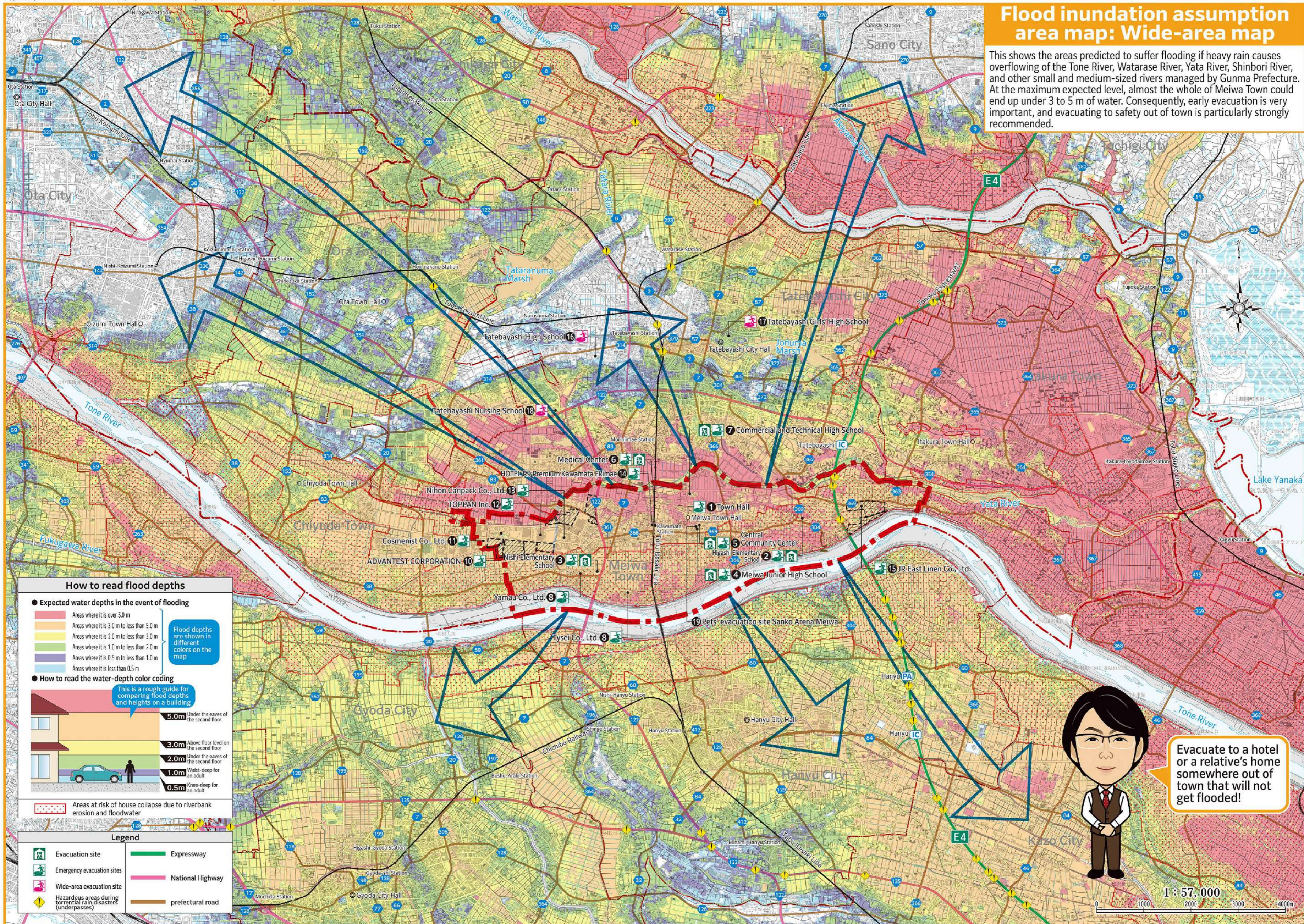
- ① **Early, wide-area evacuation to an out-of-town location by vehicle is preferable.** If your evacuation starts too late, heavy rain may flood roads and cause traffic jams, preventing safe travel.
- ② If that is not possible, go to an in-town evacuation site. However, evacuation sites may also get flooded, and their electricity, water, gas, and toilets may become unusable. When you go to an evacuation site, you will need to **take with you in advance the daily essentials you will need** in order to live there for the several days until the water recedes.
- ③ If evacuating with pets, the best option is to stay with a relative or acquaintance out of town.
- ④ Lots of people will shelter in schools used as evacuation sites, so some evacuees will have to stay in hallways, classrooms, etc., and **conditions will be far from comfortable.**

Flood inundation assumption area map: Wide-area map

This shows the areas predicted to suffer flooding if heavy rain causes overflowing of the Tone River, Watarase River, Yata River, Shinbori River, and other small and medium-sized rivers managed by Gunma Prefecture. At the maximum expected level, almost the whole of Meiwa Town could end up under 3 to 5 m of water. Consequently, early evacuation is very important, and evacuating to safety out of town is particularly strongly recommended.

Flood inundation assumption area map: Wide-area map

Flood inundation assumption area map: Wide-area map



How to read flood depths

- Expected water depths in the event of flooding
 - Areas where it is over 5.0 m
 - Areas where it is 3.0 m to less than 5.0 m
 - Areas where it is 2.0 m to less than 3.0 m
 - Areas where it is 1.0 m to less than 2.0 m
 - Areas where it is 0.5 m to less than 1.0 m
 - Areas where it is less than 0.5 m

Flood depths are shown in different colors on the map

- How to read the water-depth color coding
 - This is a rough guide for comparing flood depths and heights on a building
 - 5.0m Under the eaves of the second floor
 - 3.0m Above floor level on the second floor
 - 2.0m Under the eaves of the second floor
 - 1.0m Waist-deep for an adult
 - 0.5m Knee-deep for an adult

Areas at risk of house collapse due to riverbank erosion and floodwater

Legend

	Evacuation site		Expressway
	Emergency evacuation sites		National Highway
	Wide-area evacuation site		prefectural road
	Hazardous areas during torrential rain disasters (underpasses)		

Evacuate to a hotel or a relative's home somewhere out of town that will not get flooded!

1:57,000
0 1000 2000 3000 4000m

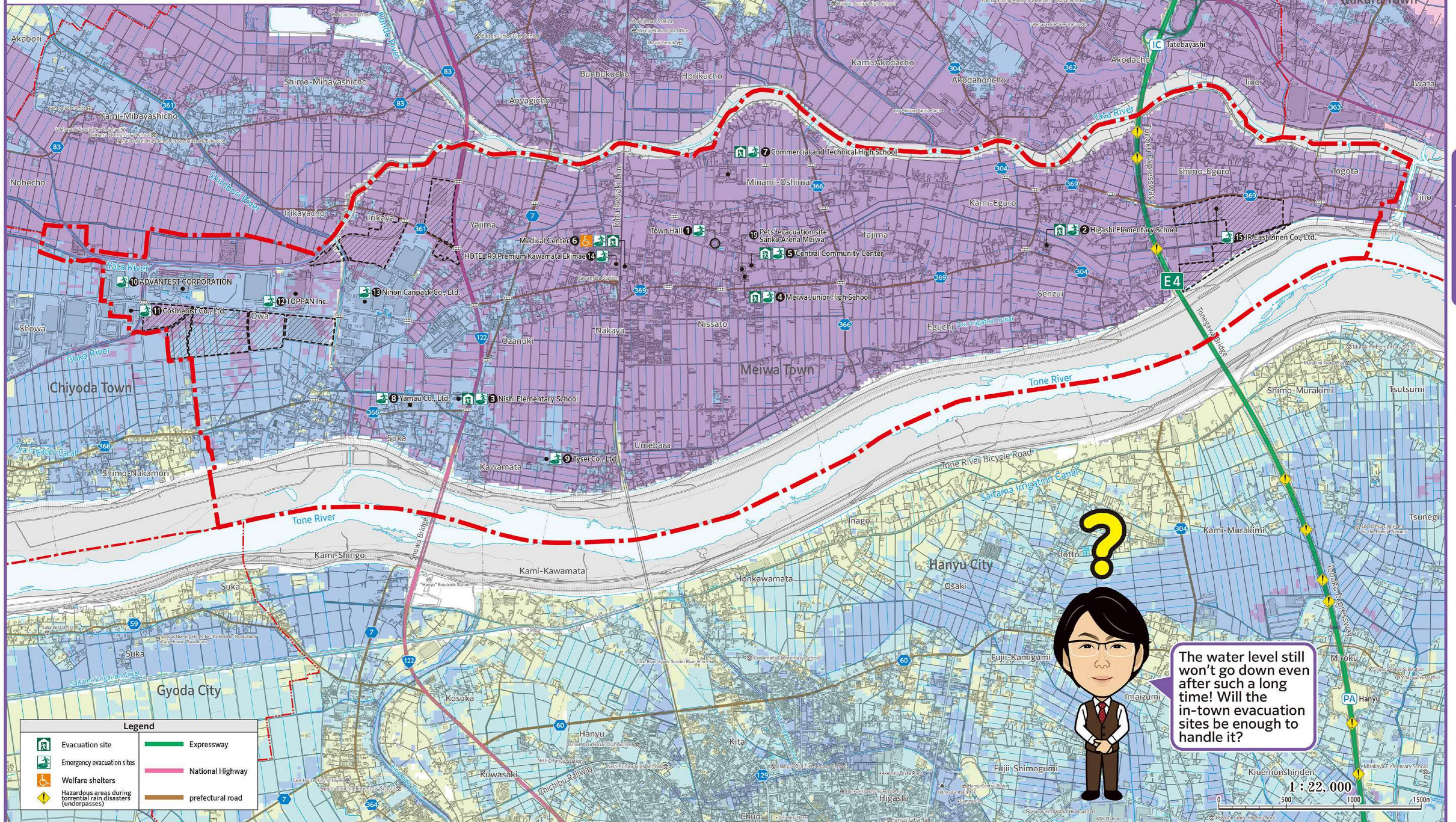
Flood duration: Tone River

Inundation duration is a rough guide to the estimated period during a flood when the inundation depth is above a certain level (0.5m), making evacuation difficult. In the case of flooding of the Tone River resulting from the maximum conceivable rainfall, it represents the time from when the water depth reaches 0.5m until it falls below 0.5m again.

Note that the estimated times may differ from the actual ones, and inundation may also occur in areas for which no duration is indicated.

Also, if inundation lasts longer, lifelines (electricity, water supply, etc.) will take more time to restore, and this can adversely affect evacuation life.

	~12hour		72hour~168hour
	12hour~24hour		168hour~336hour
	24hour~72hour		



The water level still won't go down even after such a long time! Will the in-town evacuation sites be enough to handle it?

Legend

	Evacuation site		Expressway
	Emergency evacuation sites		National Highway
	Welfare shelters		prefectural road
	Hazardous areas during torrential rain disasters (underpasses)		

1 : 22,000
0 500 1000 1500m

Areas where the current elevation has changed due to land development, etc. The flood hazard areas are based on designated data published by the national and prefectural governments in 2017.

When should you evacuate?

Even when various alerts are issued, many people will be unable to evacuate at the appropriate time. Therefore, imagine starting to evacuate in each situation, and think seriously about how to protect your lives in each case. If the alert level is raised, roads may flood, traffic jams may occur, and so on, making traveling by vehicle difficult. Taking the risks en route into account as well, plan multiple evacuation methods, considering not just the ideal ones but also ones for if you do not get away in time.

Check your family's evacuation actions using "My Home's My Timeline"

Use "My Timeline" to organize into chronological order the disaster prevention and evacuation actions you and your family will take when river water levels have risen due to a typhoon, etc., and the risk of storm or flood damage has increased. Understand the information, decisions, and actions required for evacuation based on your family structure and living environment, and share them with the whole family.

If you feel your life is in danger, evacuate regardless of the alert level. Also, alert levels will not necessarily be issued sequentially starting from Level 1.

Alert level / situation	Alert level 1 Risk of further weather deterioration	Alert level 2 Deteriorating weather conditions	Alert level 3 Risk of disaster	Alert level 4 High risk of disaster	Alert level 5 Occurrence or imminent threat of disaster
Evacuation information	The town issues an order		Evacuation of the elderly, etc. ※1		
Disaster prevention and weather information	Announced by the Japan Meteorological Agency <small>Note: The stated new disaster prevention weather information is due to start running in late May 2026.</small>		Evacuation Order		
Evacuation actions to take	Information on river flooding ▶ Information on floods, heavy rain, and inundation ▶ Raise your disaster preparedness <input type="checkbox"/> Check the weather information <input type="checkbox"/> Check the hazard maps <input type="checkbox"/> Fill up your vehicle's gas tank	Flood Advisory Heavy Rain Advisory Check your own evacuation actions <input type="checkbox"/> Check the typhoon (heavy rain) and weather information <input type="checkbox"/> Check the evacuation sites and relatives' /acquaintances' homes <input type="checkbox"/> Prepare emergency grab-and-go supplies <input type="checkbox"/> If you are evacuating outside the town, begin evacuation	Flood Warning Heavy Rain Warning The elderly, etc. evacuate from dangerous areas <input type="checkbox"/> Elderly people and other people who require special care during a disaster and take longer to evacuate should begin evacuation.	Flood Risk Warning Heavy Rain Risk Warning Everyone evacuates from dangerous areas <input type="checkbox"/> Evacuate everyone immediately <input type="checkbox"/> If you cannot get into your car due to flooding, go to an evacuation shelter in your town.	Emergency safety measures ※2 Emergency Flood Warning Emergency Heavy Rain Warning Life-threatening situation Secure safety immediately <input type="checkbox"/> If you did not get away in time, evacuate vertically to a high place (second floor or above) at home or in a building <input type="checkbox"/> Take action to protect your life
My Home's My Timeline	What should you do at each stage? Write it down here while discussing it with your family. 				

Response timeline for the "2019 East Japan Typhoon (Typhoon No. 19)"

*1: This is when people other than the elderly, etc. should also prepare to evacuate or evacuate voluntarily as needed. *2: This information will not necessarily be issued, one reason being that the town may not be able to fully ascertain the disaster situation.

Date/time	10/9 9:24	10/11 11:00	15:00	10/12 14:00	15:00	18:00	23:00
Case	Typhoon Warning	Meiwa Town Disaster Alert Headquarters established		Meiwa Town Disaster Countermeasures Headquarters established	"Prepare for Evacuation / Start evacuation for the elderly, etc." issued (whole town)	"Evacuation advisory" issued (whole town)	"Evacuation order (emergency)" issued (whole town)
Town's response	Staff were instructed to be on alert	Preparations began for opening voluntary evacuation shelters and designated emergency evacuation sites	Voluntary evacuation shelters opened (4 locations)		Designated emergency evacuation sites opened (4 locations) Note: Voluntary evacuation shelters closed	Disaster prevention administrative radio system, town website, emergency alert emails, etc.	Designated emergency evacuation sites opened (3 new locations) Disaster prevention administrative radio system, town website, emergency alert emails, etc.

At the time, responses were based on the alert levels from before the evacuation information criteria were revised.

Measures for if you have stayed at home

Preparing for evacuation life

Various situations can be expected, including relief supplies not arriving for three days or more after a disaster, and lifelines staying disrupted for over a week. Furthermore, if the sewage system is not restored, toilets will be unusable as well. For this reason, stockpiling enough food and daily necessities such as toilet supplies for at least three days to one week per person is said to be desirable.



Preparing drinking water

Including drinking and daily-use water : rough guide = 3 L per person per day

$$3 \text{ liters} \times \frac{\text{Number of family members}}{\text{person/people}} \times 7 \text{ days} = \text{Amount required} \text{ liters}$$

Preparing portable toilets

For a typical adult : rough guide = 5 times per person per day

$$5 \text{ times} \times \frac{\text{Number of family members}}{\text{person/people}} \times 7 \text{ days} = \text{Number required} \text{ times}$$

Preventing your house from flooding

When the area around your house gets flooded, sewage can backflow and water can surge up from drains, etc. Make simple water bags to prevent flooding.



Precautions for evacuating

In storm and flood disasters, the conditions can change enormously depending on when you evacuate. Make a sound decision based on the announced alert level information, and evacuate safely before it is too late. Also, if you unavoidably end up evacuating on foot in the rain, pay attention to the points below, and be careful not to get injured.

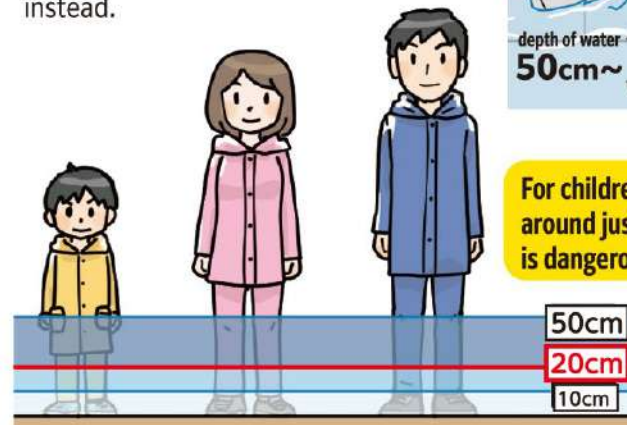
Clothing for evacuating

Evacuate with minimal belongings and wearing clothing that is easy to move in.



Be careful about walkable depths!

As a rough guide, a walkable water depth is up to knee level (around 50 cm). If the water gets up to waist level or if the current is fast even though it is shallow, do not risk it, and evacuate to a high place (second floor or above) instead.



What to do before evacuating

Before leaving your home, check for fire hazards, including turning off the circuit breaker and closing the gas main. Also, tell family, acquaintances, etc. that you are evacuating.



Watch your step!

If roads are flooded, there may be dangers beneath the murky water's surface as well. Use a long stick, umbrella, etc. as a walking stick, and check the safety as you walk along.



Evacuate in groups, helping each other as you go

Avoid moving around at night, and evacuate in a group during daylight if possible. Also, if there are people in the neighborhood who require special assistance (e.g., infants, the elderly, or injured people), actively cooperate with evacuating them.



Stay away from dangerous areas!

Going to check rivers, irrigation canals, etc. is extremely dangerous. Do not go near them at all.



If evacuating by vehicle

Do not go through underpasses

Places that go under the road (underpasses and box culverts) are structurally prone to collecting rainwater, so do not go through them in heavy rain.



If your vehicle gets flooded, get out of the vehicle immediately

When the water reaches around 30 cm deep, your vehicle's engine may stop. As the water depth and flow increase, the whole vehicle may get swept away, so exit it immediately.



Beware of lightning, gusty winds, etc.

Lightning and gusty winds like tornadoes often occur during the same period as storm and flood disasters, and are severe weather phenomena that happen suddenly along with developed cumulonimbus clouds. The Japan Meteorological Agency issues a Thunderstorm Advisory not only for lightning but also if dangers like gusty winds or hail are expected.

When these occur, a developed cumulonimbus cloud is approaching Beware of dangers like sudden heavy rain, lightning, and gusty winds!



Dark clouds (cumulonimbus clouds) approach and the surroundings suddenly get dark.



Thunder (rumbling, etc.) and flashes of light are coming from approaching clouds.



There is a sudden, cold gust of wind.



Large raindrops and hail (small lumps of ice) start to fall.

Lightning-related disasters

lightning strike

May strike directly in open areas, etc.

side lightning

When lightning strikes a tree, it can travel through the branches, etc.



Lightning-prone areas

- Outdoor sports fields for golf, soccer, baseball, etc.
- Outdoor tourist areas such as parks, the ocean, and mountains

How to protect yourself from lightning

1 If you hear thunder, evacuate immediately

Do not assume it is safe, and if outdoors, evacuate immediately.

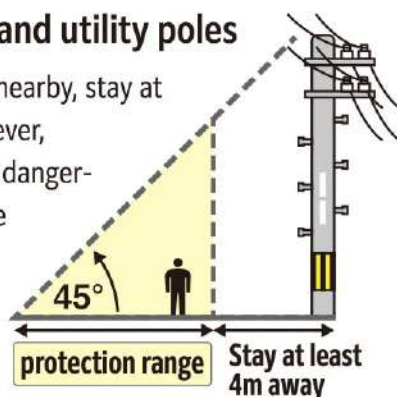
2 Take shelter in a sturdy building or vehicle

If outside, take shelter in a building (reinforced concrete or steel ones are safer) or vehicle.



3 Stay away from trees and utility poles

If there are trees or utility poles nearby, stay at least 4 m away from them. However, moving too far away can also be dangerous, so stay within the protective range shown in the diagram on the right.



4 If there is no shelter, assume the "thunder crouch"

If there is nowhere to shelter, assume the posture shown on the right and wait for the lightning to pass. However, this is only a last resort, so make evacuating your first priority.



Disasters caused by gusty winds

Flying debris from roofs, etc.

Utility poles and trees collapsing

Building collapse

Getting hit by flying objects



How to protect yourself from gusty winds

1 Evacuate to a sturdy building, watching out for flying objects

It is dangerous to take shelter in a garage, storage shed, or prefabricated building. Always take shelter in a nearby sturdy building.



2 If you cannot go into a building

Take cover in a low area such as a ditch, crouch down, protect your head and neck with both hands, and wait for the danger to pass.

3 Stay away from windows even indoors

Close windows, shutters, and curtains, and take shelter in a windowless room near the center of the house.



To leave no one behind

Community-based disaster prevention efforts

To protect yourself from disasters, it is important to work in coordination with government support “public assistance”, and also pursue “self-help” to protect your own life and “mutual assistance” with neighbors, etc. to help each other.



What is a voluntary disaster prevention organization?

A “voluntary disaster prevention organization” is a group in which local residents who value “face-to-face relationships” all work together on disaster preparedness to make their community safer, based on the principle of “protect our own community ourselves.” Let’s all discuss things together, and start with what we can do ourselves.

Examples of voluntary disaster prevention activities

~Activities to prepare for disasters in normal times, and activities to support the community during disasters~

In normal times	In the event of a disaster	In normal times	In the event of a disaster
<p>Coordinate with the town hall, fire department, etc. to get ready for disaster prevention activities.</p>	<p>Coordinate with the town hall, fire department, etc., and manage on-site operations.</p>	<p>Conduct training on how to use rescue equipment, how to evacuate the injured, and how to give first aid, and check the locations of medical facilities and first-aid stations. Inspect the activity equipment and keep it in good repair.</p>	<p>Perform rescue work using equipment and materials. Give injured people first aid and transport them to medical facilities and aid stations.</p>
<p>Spreading disaster prevention knowledge through drills and training sessions. Raising disaster prevention awareness among residents through circular notices, flyers, etc.</p>	<p>Collect information from the town hall and fire services, and provide accurate information to residents. Report the community's damage and evacuation situations to the town hall.</p>	<p>Identify dangerous areas within the area. Know multiple evacuation routes and sites, and conduct guidance drills.</p>	<p>Guide residents accurately to evacuation sites so that safe action can be taken as an organization.</p>
<p>Check for factors within the community that could cause or spread fire damage. Inspect fire extinguishing equipment and learn effective firefighting techniques.</p>	<p>Asking nearby residents to cooperate, carry out initial firefighting to prevent the fire from spreading.</p>	<p>Stockpiling and managing supplies. Conducting soup runs, water distribution drills, etc.</p>	<p>Conducting soup runs and securing drinking water. Receiving and distributing food and relief supplies.</p>

Show consideration to people who require special assistance

People who will require special consideration (e.g., elderly people, people with disabilities, sick or injured people, infants, pregnant women, and foreign nationals) are referred to as people who require special assistance. Typical needs include taking longer to evacuate and not being able to understand information or the situation rapidly. Looking back at past disasters reveals that many people in these groups lost their lives. In an emergency, let’s all help each other as a community.



Building relationships and support on a daily basis

Discuss what kinds of support can be provided through things like voluntary disaster prevention organizations. Understand the living circumstances, etc. of people in the community who require special assistance, decide things like how to share information with and support them in a disaster, and convey the decisions to them in advance. This is another good reason for communicating with each other on a daily basis and building relationships of trust.



Key points for safe guidance



Elderly people / sick or injured people

- Communicate the situation clearly
- Talk to them to ease their anxiety
- Lend them a hand with evacuating, or give them a piggyback



People with disabilities

- Give them a helping hand
- When guiding people with visual impairments, explain the actions verbally



Pregnant women / infants

- Help by carrying belongings, etc.
- Keep an eye out so that the children do not get separated or injured



Foreign nationals

- If the language barrier is a problem, explain the situation using gestures or drawings, or via a translation app if there is a smartphone available

Prepare emergency grab-and-go supplies and stockpiled supplies

Use the list below for things like “emergency grab-and-go supplies” for going to an evacuation site and “stockpiled supplies” for sheltering at home, and make preparations that suit the situation. Having your usual, familiar foods and daily necessities with you can be reassuring at evacuation sites, too.

The necessary items will differ depending on the type of disaster and where you evacuate to!



Emergency grab-and-go supplies Each family member prepares the minimum set of things they themselves will need

- | | | |
|---|---|---|
| <input type="checkbox"/> Change of clothes (ones you can regulate your body temperature with) | <input type="checkbox"/> Emergency food (ready-to-eat) | <input type="checkbox"/> Towels |
| <input type="checkbox"/> Medications for chronic illnesses (including a copy of the medication records) | <input type="checkbox"/> Flashlight/headlamp | <input type="checkbox"/> Batteries |
| <input type="checkbox"/> Rain gear (raincoat, etc.) | <input type="checkbox"/> Emergency radio (compact/multi-function type) | <input type="checkbox"/> Portable toilets |
| <input type="checkbox"/> Whistle | <input type="checkbox"/> Disaster prevention hood / helmet | <input type="checkbox"/> First aid kits |
| <input type="checkbox"/> Writing utensils | <input type="checkbox"/> Valuables (copies of bankbooks and health insurance cards) | |
| <input type="checkbox"/> Slippers (for evacuation sites) | <input type="checkbox"/> Cash (including coins for public phones) | |
| <input type="checkbox"/> Plastic bags / shopping bags | <input type="checkbox"/> Work gloves | |
| <input type="checkbox"/> Mobile battery | | |
| <input type="checkbox"/> Drinking water | | |



● Infection prevention measures

- Disposable masks
- Thermometers
- Disinfecting wipes

Stockpiled supplies Prepare enough for your family, with a rough guide of at least three days to one week until recovery

- **Food, etc.**
 - Food (rice, pre-cooked dried rice, instant noodles, canned food, premade food, etc.)
 - Cling wrap / aluminum foil
 - Disposable tableware (cups, plates, etc.)
 - Drinking water (approx. 3 L per person per day)
- **Daily necessities**
 - Change of clothes (outerwear, underwear, etc.)
 - Blankets / light blankets
 - Fuel (cassette gas, etc.)
 - Various spare items (batteries, etc.)
 - Towels (bath towels, etc.)
 - Lantern (flameless type)
 - Garbage bags / plastic bags
 - Tent/tarp, etc.
- **Hygiene supplies**
 - No-rinse shampoo
 - Portable toilet (rough guide: 5 times per person per day)
 - Wet wipes
 - Disposable masks
 - Toothbrush set (including mouthwash, etc. as well)
 - Toilet paper
 - Daily medicines
 - Alcohol disinfectant

The necessary items in view of the family's structure and circumstances (e.g., things for babies, elderly people, and people who require nursing care)

Babies/infants



- Powdered/liquid milk
- Maternal and child health handbook
- Baby food
- Baby wipes
- Feeding bottle
- Diapers

Elderly people / people who require nursing care

- Nursing care food
- Daily medicines
- Adult diapers
- Dentures
- Disability certificate
- Nursing care insurance card



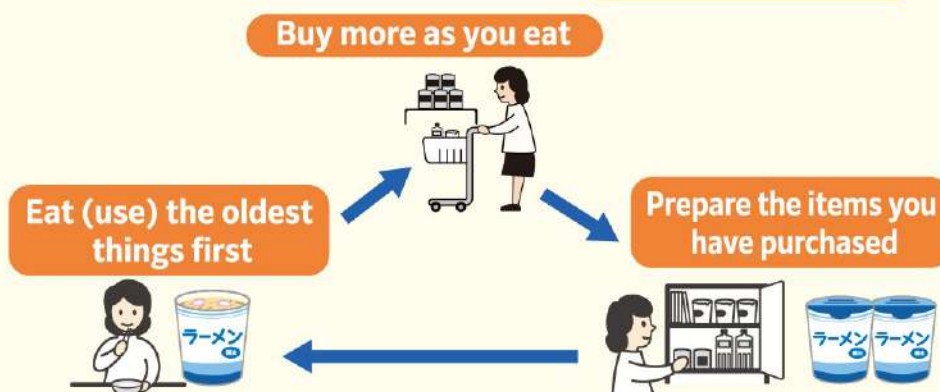
For women

- Sanitary products
- Skin care products
- Personal alarm
- Poncho



Regularly update your stockpile by practicing rolling stock

Buying a little extra food and daily necessities, then maintaining your supplies by replacing what you have eaten (used) is called **rolling stock**. Since you can keep them at the ready while also consuming them, things like pre-packaged foods with short expiration dates can also be used as emergency food.



Toward restoring normal daily life

When your home gets damaged in a disaster, the shock may leave you not knowing where to begin. Before starting the cleanup or repair work, check what you need to do to get support, etc. going forward.

Disaster victim certificates and disaster damage certificates

Disaster victim certificates and disaster damage certificates are certificates issued by towns, etc. to certify physical damage caused by natural disasters or fires. People who have suffered damage due to a disaster, etc. sometimes need them to claim insurance or use disaster victim support programs.

Disaster victim certificates

This applies to damage to dwellings intended for people to live in. Based on an application, an on-site inspection will be conducted, and the damage will be classified as "total destruction," "partial destruction," etc.

Procedure flow

- 1 Get the required documents ready
- 2 Apply to Meiwa Town Hall, or to the fire department in the case of fire damage

Items required for the procedures

- 1 Application form
 - 2 Identification documents (My Number card, driver's license, etc.)
 - 3 Photos of the damaged areas (Attaching these is optional unless you want to use the self-assessment method, in which case it is required.)
- ※ Note: With the self-assessment method, confirmation is done by means of photos of the damaged areas, and no on-site inspections are conducted. Disaster victim certificates issued through the self-assessment method are limited to cases where damage to the residence is classified as "partial destruction not amounting to half collapse" (damage of 10% or less).



Disaster damage certificate

This applies to damage to non-residential property, e.g., buildings not used for housing (stores, offices, factories, etc.), outdoor installations (warehouses, fences, etc.), vehicles, and household goods. No on-site inspections or damage classification will be done for these.

Procedure flow

- 1 Take photos of the damage before doing any cleaning up or repairs
- 2 Apply to Meiwa Town Hall

Items required for the procedures

- 1 Application form
- 2 Identification document (My Number card, driver's license, etc.)
- 3 Photos of the damaged items (showing the extent of the damage)



Point of contact

Meiwa Town Tax Division TEL:0276-84-3111

Record the damage situation with photos

Outdoors

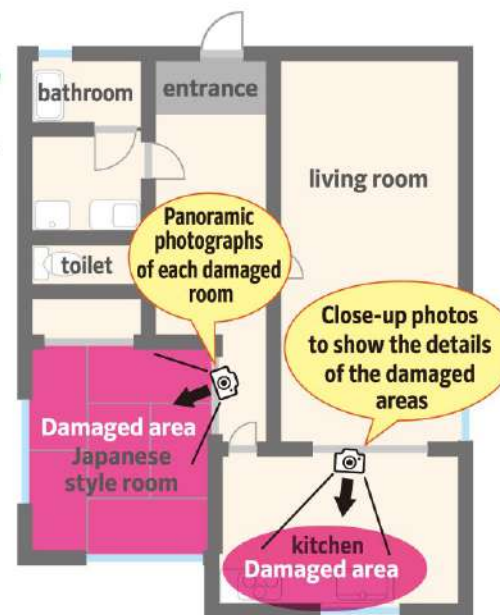
Take photos with a camera, smartphone, etc., from four directions if possible



If it got flooded, also take photos that show the water depth

Indoors

For indoor photos, aim to take two types: wide shots that show the overall situation and close-ups that show the details



Before doing any cleanup work, etc. on your home, take photos of the damage. You will need them for things like getting certificates from the town to receive support and claiming insurance.



List of evacuation facilities

Wide-area evacuation to an out-of-town location is recommended, but the following evacuation facilities have been designated for use in an emergency. Please be aware that the roles vary depending on the type of facility.

VACAN maps

See what evacuation sites have been opened, and how crowded they are



Can be used during flooding



Designated emergency evacuation sites

These are places for people to evacuate to urgently (temporarily) to protect their lives from an imminent and dangerous disaster. They have no stockpiled supplies or similar preparations. Private facilities can only be used when the town has asked them to accept evacuees and they have become able to do so.

No.	Name	Location
①	Meiwa Town Hall	Nissato 250-1
②	Meiwa-Higashi Elementary School	Senzui 293
③	Meiwa-Nishi Elementary School	Kawamata 26
④	Meiwa Junior High School	Nissato 298-1
⑤	Meiwa Central Community Center	Nissato 303-1
⑥	Meiwa Medical Center Building	Nakaya 331-1
⑦	Tatebayashi Commercial and Technical High School	Minami-Oshima 660
⑧	Yamau Co., Ltd.	Suka 275
⑨	Tysei Co., Ltd.	Kawamata 538
⑩	ADVANTEST CORPORATION	Owa 336-1
⑪	Cosmenist Co., Ltd.	Owa 446
⑫	TOPPAN Inc.	Owa 667-1
⑬	Nihon Canpack Co., Ltd.	Yajima 1111
⑭	HOTEL R9 Premium Kawamata Ekimae	Nakaya 115-1
⑮	JR East Linen Co., Ltd.	Shimo-Eguro 560-3

Usable during an earthquake

Name	Location
Meiwa Town Hall	Nissato 250-1
Meiwa-Higashi Elementary School	Senzui 293
Meiwa-Nishi Elementary School	Kawamata 26
Meiwa Junior High School	Nissato 298-1
Meiwa Central Community Center	Nissato 303-1
Sanko Arena Meiwa	Nissato 299-1
Nihon Canpack Hall	Minami-Oshima 1073-1
Meiwa Medical Center Building	Nakaya 331-1
Fureai Center Suzukake	Senzui 314-1
Fureai Center Popura	Suka 249-1
HOTEL R9 Premium Kawamata Ekimae	Nakaya 115-1
Suzukake Park	Kami-Eguro 635
Sakura Central Park	Minami-Oshima 1656-1
Furusato Square	Nissato 317-1 and others
Owa Park	Owa 236-10
Yajima Park	Yajima 900-4



Designated evacuation shelters

These facilities are intended for people to stay in temporarily if damage prevents them from getting home, etc. after a disaster.

No.	Name	Location
②	Meiwa-Higashi Elementary School	Senzui 293
③	Meiwa-Nishi Elementary School	Kawamata 26
④	Meiwa Junior High School	Nissato 298-1
⑤	Meiwa Central Community Center	Nissato 303-1
⑥	Meiwa Medical Center Building	Nakaya 331-1
⑦	Tatebayashi Commercial and Technical High School	Minami-Oshima 660

Name	Location
Meiwa-Higashi Elementary School	Senzui 293
Meiwa-Nishi Elementary School	Kawamata 26
Meiwa Junior High School	Nissato 298-1
Meiwa Central Community Center	Nissato 303-1
Sanko Arena Meiwa	Nissato 299-1
Nihon Canpack Hall	Minami-Oshima 1073-1
Meiwa Medical Center Building	Nakaya 331-1
Fureai Center Suzukake	Senzui 314-1
Fureai Center Popura	Suka 249-1



Welfare shelters

These facilities give priority to accepting people who require special assistance (e.g., the elderly and people with disabilities) and their families, who will find it difficult to evacuate to designated emergency evacuation sites in a disaster.

No.	Name	Location
⑥	Meiwa Medical Center Building	Nakaya 331-1

Name	Location
Meiwa Medical Center Building	Nakaya 331-1
Fureai Center Suzukake	Senzui 314-1
Fureai Center Popura	Suka 249-1



Wide-area evacuee accommodation facilities

Facilities that will accept evacuees seeking shelter out of town

No.	Name	Location
⑬	Tatebayashi High School	Fujiharacho 1241, Tatebayashi City
⑭	Tatebayashi Girls' High School	Obikicho 6-1, Tatebayashi City
⑮	Tatebayashi Nursing School	Naegicho 2497-1, Tatebayashi City



● Evacuating with pets

Pets are also important family members. Having them evacuation-ready is another good reason for giving them regular vaccinations, toilet-training them, and getting them used to a carrier or cage. No facilities other than the one listed below will let you evacuate to them with pets. Also, pets may not necessarily be able to shelter there together with their owners.

⑯ Sanko Arena Meiwa

Address : Nissato 299-1, Meiwa Town



Make sure dog registration has been completed, and vaccinations against rabies, etc. are all up-to-date!



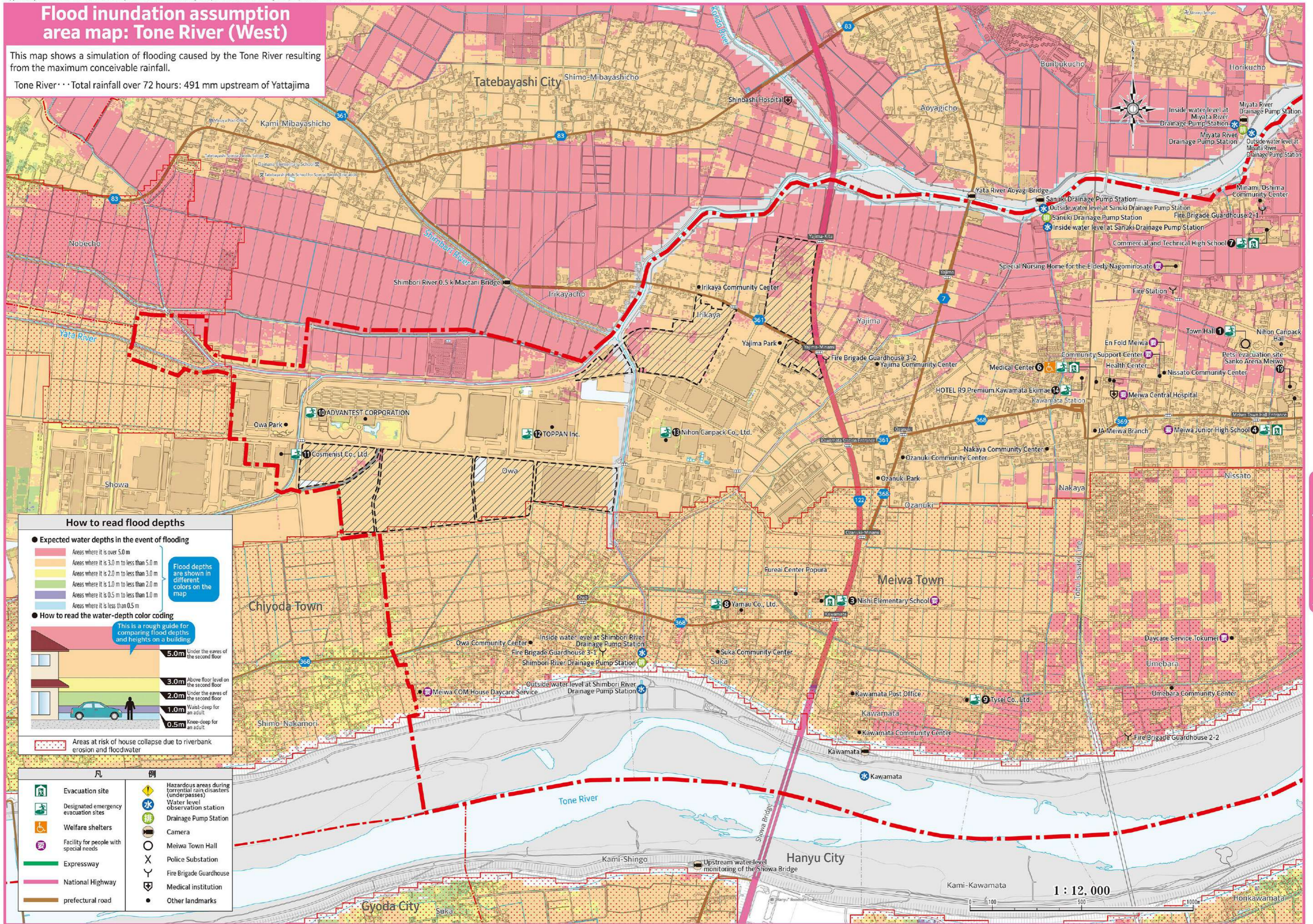
Emergency supplies for pets

- Collar/leash
- ID tag (license tag or identification information)
- Water and pet food
- Carrier bag/cage
- Pet toilet supplies, etc.

Flood inundation assumption area map: Tone River (West)

This map shows a simulation of flooding caused by the Tone River resulting from the maximum conceivable rainfall.

Tone River Total rainfall over 72 hours: 491 mm upstream of Yattajima



Flood inundation assumption area map: Tone River (West)

Flood inundation assumption area map: Tone River (West)

How to read flood depths

- Expected water depths in the event of flooding
 - Areas where it is over 5.0 m
 - Areas where it is 3.0 m to less than 5.0 m
 - Areas where it is 2.0 m to less than 3.0 m
 - Areas where it is 1.0 m to less than 2.0 m
 - Areas where it is 0.5 m to less than 1.0 m
 - Areas where it is less than 0.5 m

Flood depths are shown in different colors on the map

How to read the water-depth color coding

This is a rough guide for comparing flood depths and heights on a building

- 5.0m Under the eaves of the second floor
- 3.0m Above floor level on the second floor
- 2.0m Under the eaves of the second floor
- 1.0m Waist-deep for an adult
- 0.5m Knee-deep for an adult

Areas at risk of house collapse due to riverbank erosion and floodwater

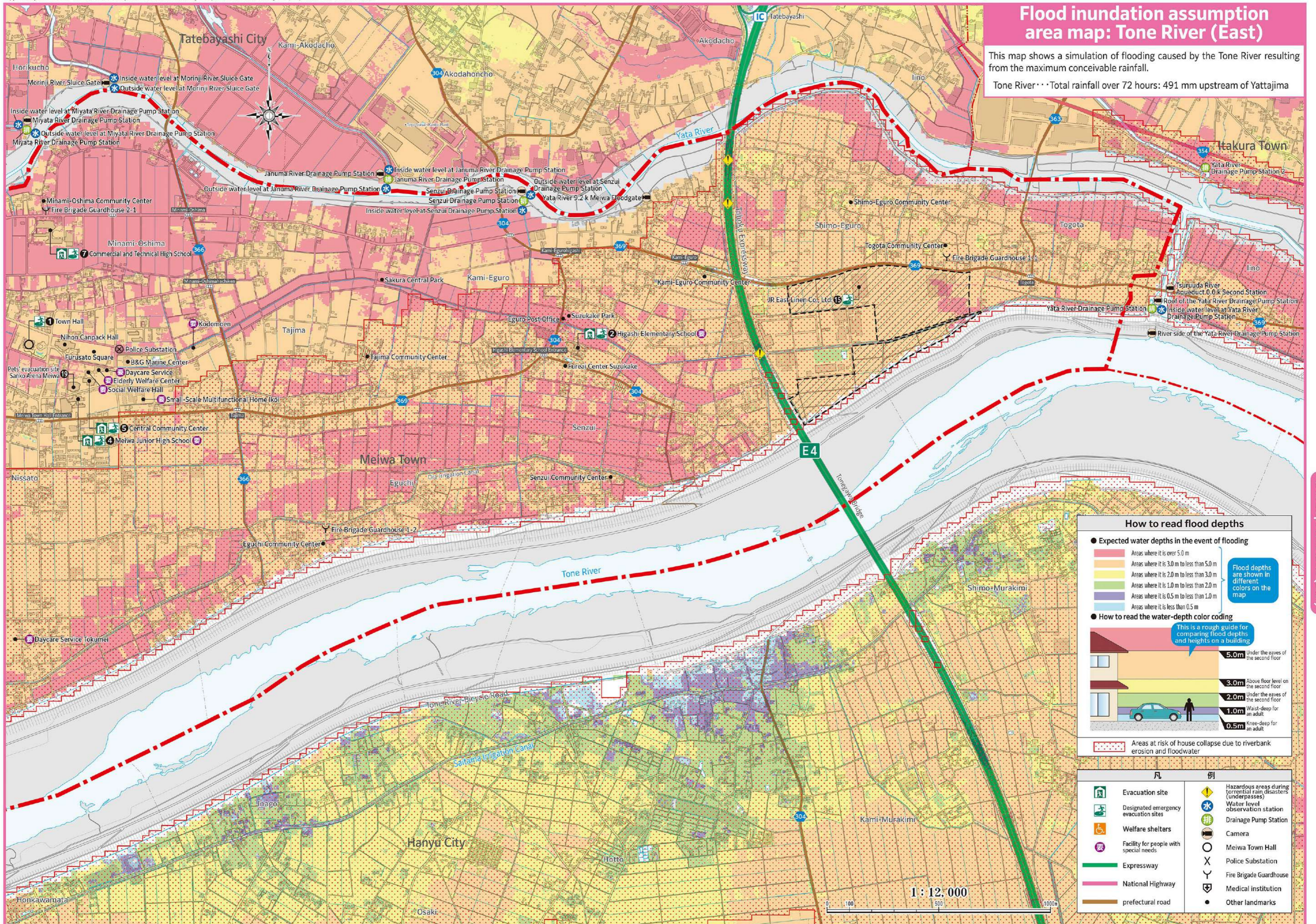
凡 (Symbol)	例 (Description)
	Evacuation site
	Designated emergency evacuation sites
	Welfare shelters
	Facility for people with special needs
	Expressway
	National Highway
	prefectural road
	Hazardous areas during torrential rain disasters (underpasses)
	Water level observation station
	Drainage Pump Station
	Camera
	Meiwa Town Hall
	Police Substation
	Fire Brigade Guardhouse
	Medical institution
	Other landmarks

Areas where the current elevation has changed due to land development, etc. The flood hazard areas are based on designated data published by the national and prefectural governments in 2017.

Flood inundation assumption area map: Tone River (East)

This map shows a simulation of flooding caused by the Tone River resulting from the maximum conceivable rainfall.

Tone River ··· Total rainfall over 72 hours: 491 mm upstream of Yattajima



How to read flood depths

- Expected water depths in the event of flooding
 - Red: Areas where it is over 5.0 m
 - Orange: Areas where it is 3.0 m to less than 5.0 m
 - Yellow: Areas where it is 2.0 m to less than 3.0 m
 - Green: Areas where it is 1.0 m to less than 2.0 m
 - Light Green: Areas where it is 0.5 m to less than 1.0 m
 - Blue: Areas where it is less than 0.5 m

Flood depths are shown in different colors on the map

How to read the water-depth color coding

This is a rough guide for comparing flood depths and heights on a building

5.0m	Under the eaves of the second floor
3.0m	Above floor level on the second floor
2.0m	Under the eaves of the second floor
1.0m	Waist-deep for an adult
0.5m	Knee-deep for an adult

Areas at risk of house collapse due to riverbank erosion and floodwater

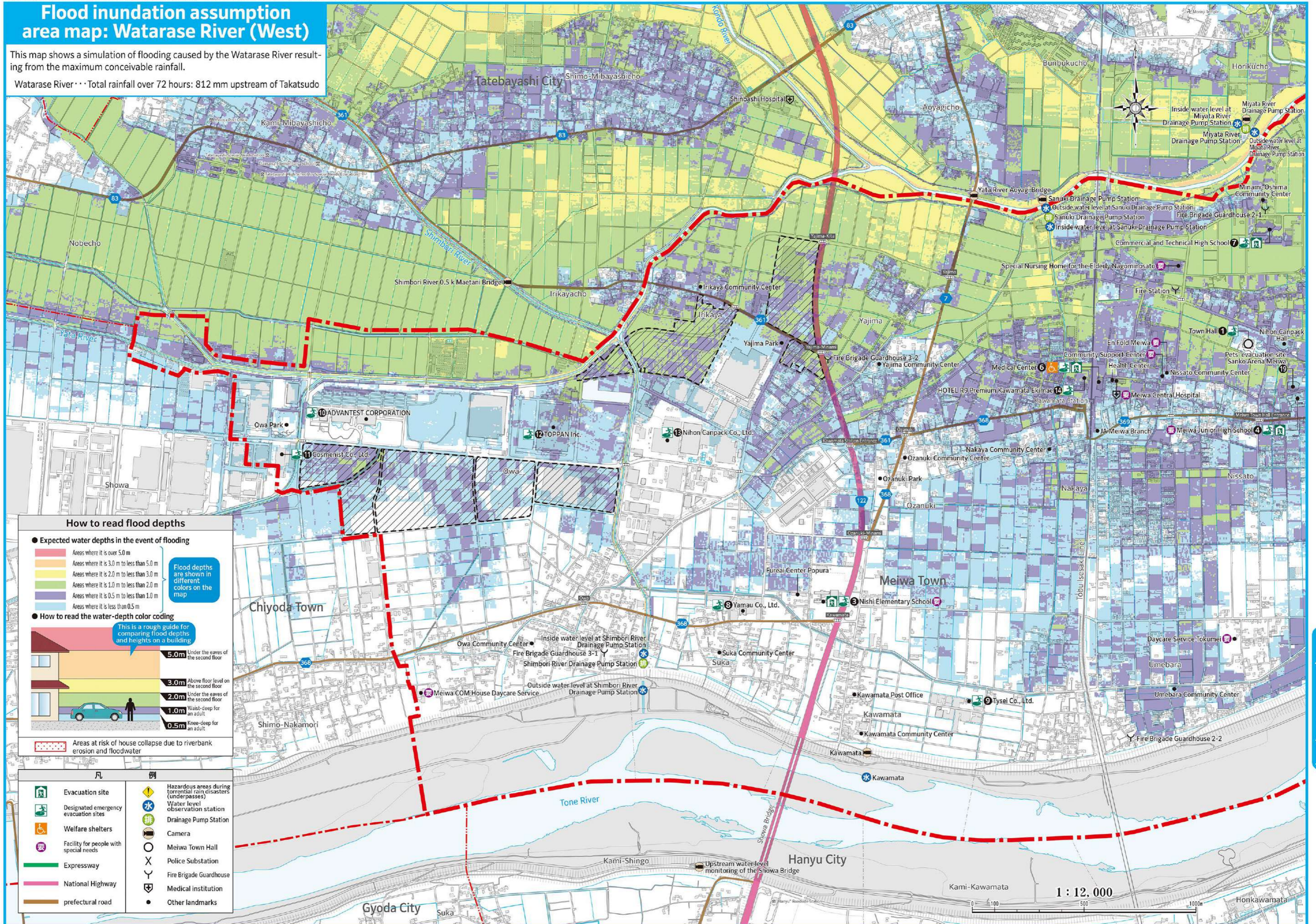
凡 (Legend)	例 (Example)
Evacuation site	Hazardous areas during torrential rain disasters (underpasses)
Designated emergency evacuation sites	Water level observation station
Welfare shelters	Drainage Pump Station
Facility for people with special needs	Camera
Expressway	Meiwa Town Hall
National Highway	Police Substation
prefectural road	Fire Brigade Guardhouse
	Medical institution
	Other landmarks

Areas where the current elevation has changed due to land development, etc. The flood hazard areas are based on designated data published by the national and prefectural governments in 2017.

Flood inundation assumption area map: Watarase River (West)

This map shows a simulation of flooding caused by the Watarase River resulting from the maximum conceivable rainfall.

Watarase River Total rainfall over 72 hours: 812 mm upstream of Takatsudo



How to read flood depths

- Expected water depths in the event of flooding
 - Areas where it is over 5.0 m
 - Areas where it is 3.0 m to less than 5.0 m
 - Areas where it is 2.0 m to less than 3.0 m
 - Areas where it is 1.0 m to less than 2.0 m
 - Areas where it is 0.5 m to less than 1.0 m
 - Areas where it is less than 0.5 m

Flood depths are shown in different colors on the map

How to read the water-depth color coding

This is a rough guide for comparing flood depths and heights on a building

- 5.0m Under the eaves of the second floor
- 3.0m Above floor level on the second floor
- 2.0m Under the eaves of the second floor
- 1.0m Waist-deep for an adult
- 0.5m Knee-deep for an adult

Areas at risk of house collapse due to riverbank erosion and floodwater

	Evacuation site		Hazardous areas during torrential rain disasters (underpasses)
	Designated emergency evacuation sites		Water level observation station
	Welfare shelters		Drainage Pump Station
	Facility for people with special needs		Camera
	Expressway		Meiwa Town Hall
	National Highway		Police Substation
	prefectural road		Fire Brigade Guardhouse
			Medical institution
			Other landmarks

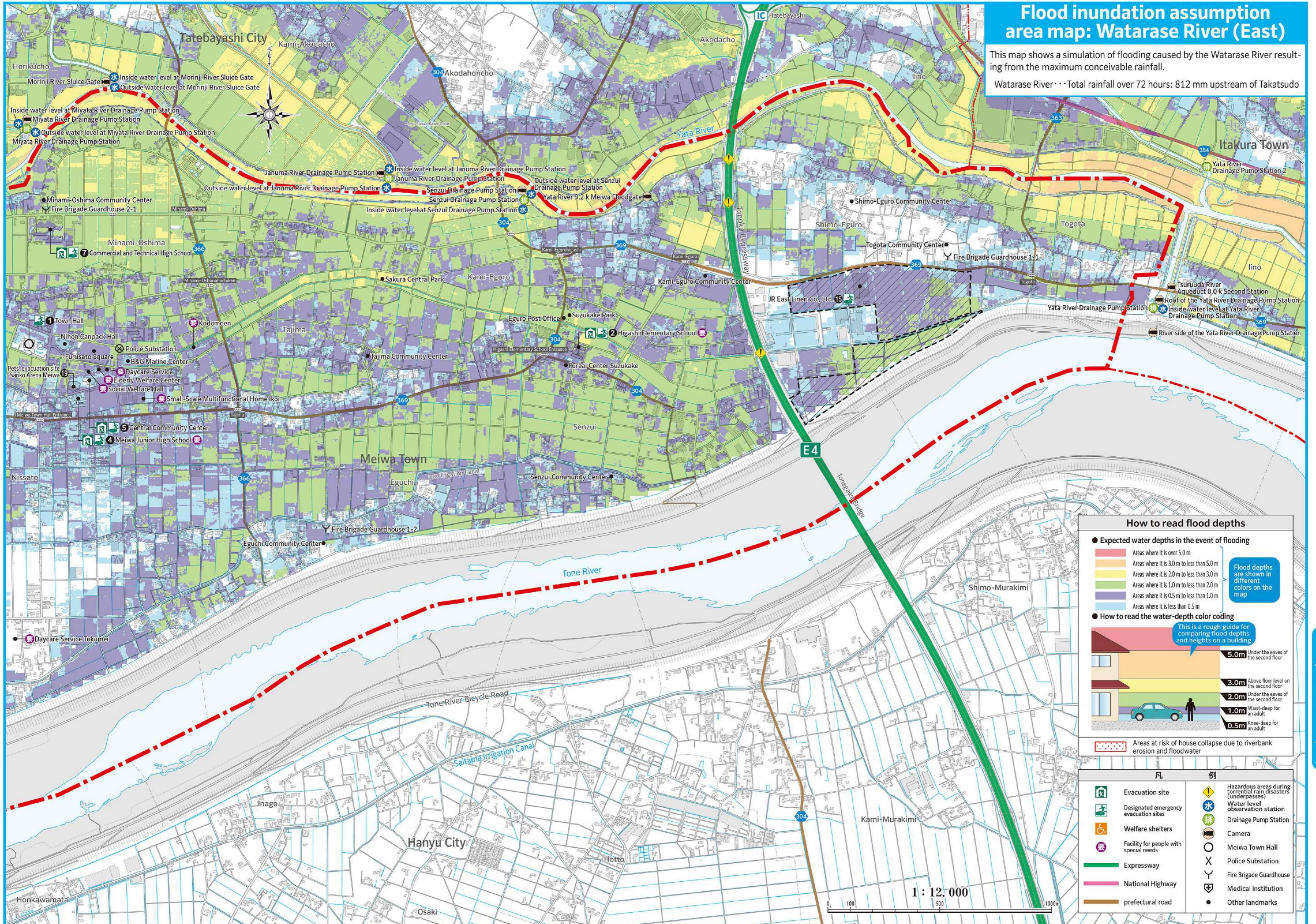
Flood inundation assumption area map: Watarase River (West)

Areas where the current elevation has changed due to land development, etc. The flood hazard areas are based on designated data published by the national and prefectural governments in 2017.

Flood inundation assumption area map: Watarase River (East)

This map shows a simulation of flooding caused by the Watarase River resulting from the maximum conceivable rainfall.

Watarase River: Total rainfall over 72 hours: 812 mm upstream of Takatsudo



How to read flood depths

- Expected water depths in the event of flooding
 - Areas where it is over 5.0 m
 - Areas where it is 3.0 m to less than 5.0 m
 - Areas where it is 2.0 m to less than 3.0 m
 - Areas where it is 1.0 m to less than 2.0 m
 - Areas where it is 0.5 m to less than 1.0 m
 - Areas where it is less than 0.5 m

Flood depths are shown in different colors on the map

How to read the water-depth color coding

This is a rough guide for comparing flood depths and heights on a building

- 5.0m Under the eaves of the second floor
- 3.0m Above floor level on the second floor
- 2.0m Under the eaves of the second floor
- 1.0m Waist-deep for an adult
- 0.5m Knee-deep for an adult

Areas at risk of house collapse due to riverbank erosion and floodwater

凡	例		
	Evacuation site		Hazardous areas during torrential rain disasters (underpasses)
	Designated emergency evacuation sites		Water level observation station
	Welfare shelters		Drainage Pump Station
	Facility for people with special needs		Camera
	Expressway		Meiwa Town Hall
	National Highway		Police Substation
	prefectural road		Fire Brigade Guardhouse
			Medical institution
			Other landmarks

1 : 12,000

Areas where the current elevation has changed due to land development, etc.

The flood hazard areas are based on designated data published by the national and prefectural governments in 2017.

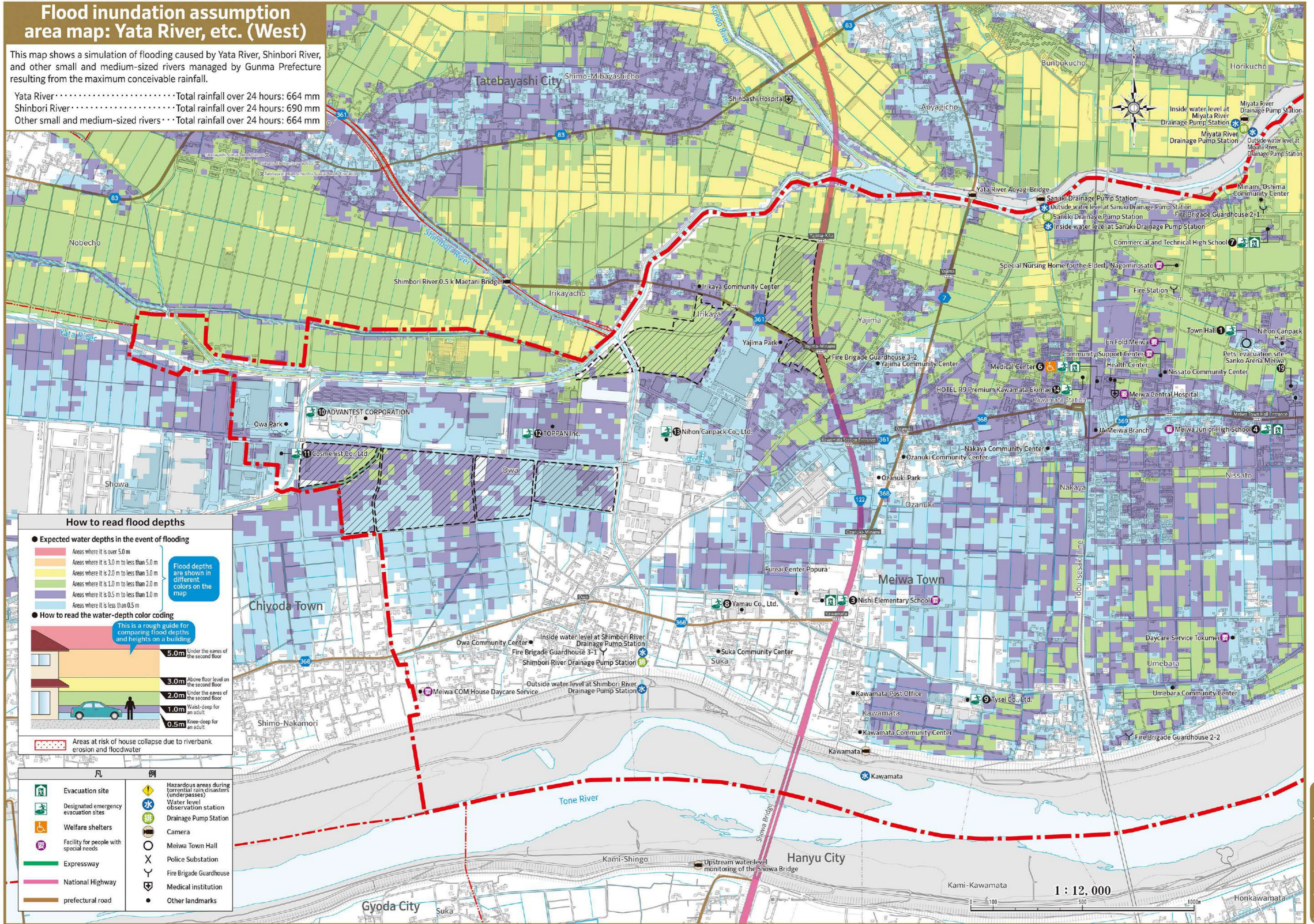
Flood inundation assumption area map: Watarase River (East)

Flood inundation assumption area map: Watarase River (East)

Flood inundation assumption area map: Yata River, etc. (West)

This map shows a simulation of flooding caused by Yata River, Shinbori River, and other small and medium-sized rivers managed by Gunma Prefecture resulting from the maximum conceivable rainfall.

- Yata River Total rainfall over 24 hours: 664 mm
- Shinbori River Total rainfall over 24 hours: 690 mm
- Other small and medium-sized rivers Total rainfall over 24 hours: 664 mm



How to read flood depths

- Expected water depths in the event of flooding
 - Areas where it is over 5.0 m
 - Areas where it is 3.0 m to less than 5.0 m
 - Areas where it is 2.0 m to less than 3.0 m
 - Areas where it is 1.0 m to less than 2.0 m
 - Areas where it is 0.5 m to less than 1.0 m
 - Areas where it is less than 0.5 m

Flood depths are shown in different colors on the map

How to read the water-depth color coding

This is a rough guide for comparing flood depths and heights on a building

- 5.0m Under the eaves of the second floor
- 3.0m Above floor level on the second floor
- 2.0m Under the eaves of the second floor
- 1.0m Waist-deep for an adult
- 0.5m Knee-deep for an adult

Areas at risk of house collapse due to riverbank erosion and floodwater

	Evacuation site		Hazardous areas during torrential rain disasters (underpasses)
	Designated emergency evacuation sites		Water level observation station
	Welfare shelters		Drainage Pump Station
	Facility for people with special needs		Camera
	Expressway		Meiwa Town Hall
	National Highway		Police Substation
	prefectural road		Fire Brigade Guardhouse
			Medical institution
			Other landmarks

Scale: 1 : 12,000
 0 100 500 1000m
 Areas where the current elevation has changed due to land development, etc.
 The flood hazard areas are based on designated data published by the national and prefectural governments in 2017.

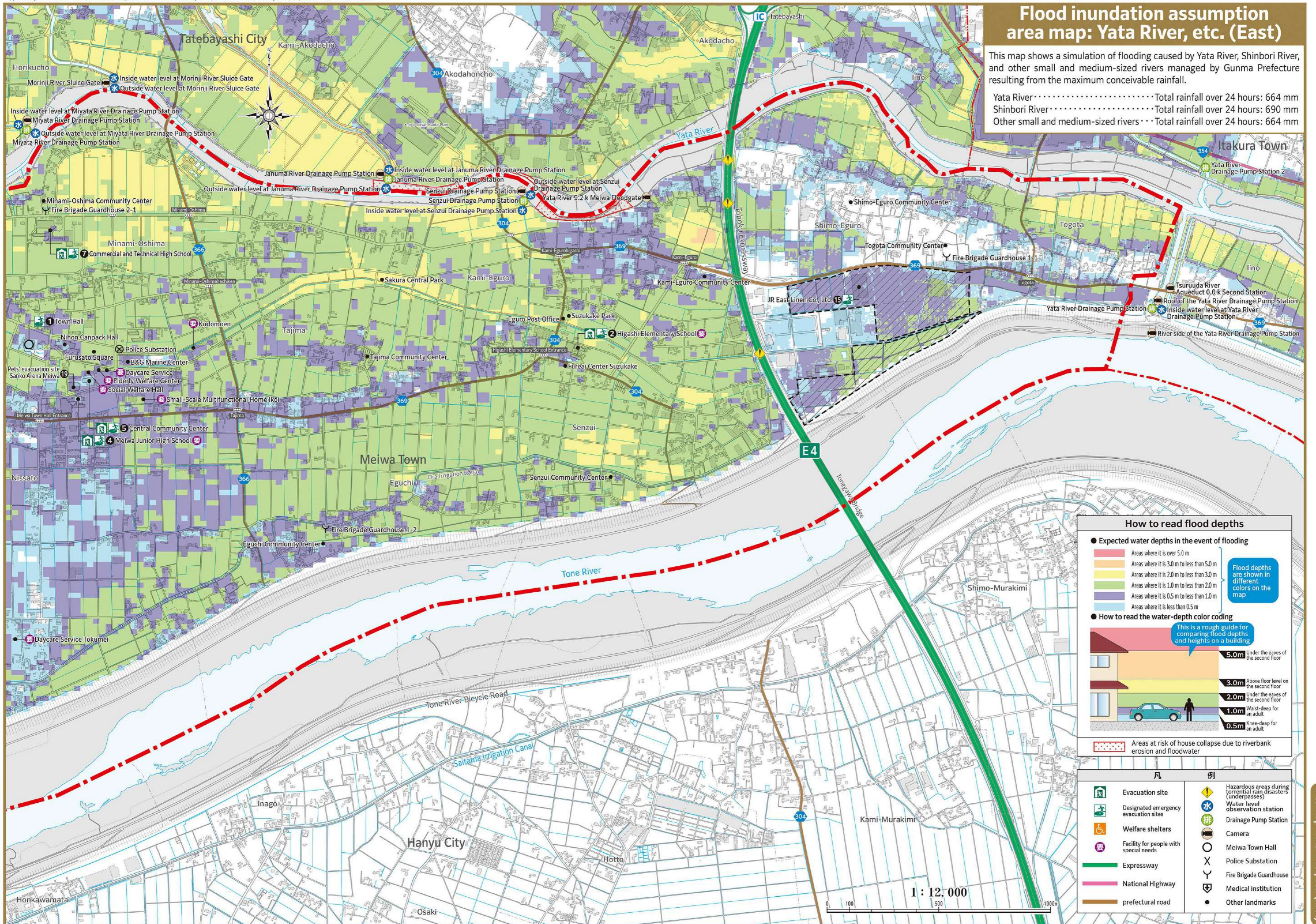
Flood inundation assumption area map: Yata River, etc. (West)

Flood inundation assumption area map: Yata River, etc. (West)

Flood inundation assumption area map: Yata River, etc. (East)

This map shows a simulation of flooding caused by Yata River, Shinbori River, and other small and medium-sized rivers managed by Gunma Prefecture resulting from the maximum conceivable rainfall.

Yata River Total rainfall over 24 hours: 664 mm
 Shinbori River Total rainfall over 24 hours: 690 mm
 Other small and medium-sized rivers Total rainfall over 24 hours: 664 mm



How to read flood depths

- Expected water depths in the event of flooding
 - Areas where it is over 5.0 m
 - Areas where it is 3.0 m to less than 5.0 m
 - Areas where it is 2.0 m to less than 3.0 m
 - Areas where it is 1.0 m to less than 2.0 m
 - Areas where it is 0.5 m to less than 1.0 m
 - Areas where it is less than 0.5 m

Flood depths are shown in different colors on the map

How to read the water-depth color coding

This is a rough guide for comparing flood depths and heights on a building

5.0m	Under the eaves of the second floor
3.0m	Above floor level on the second floor
2.0m	Under the eaves of the second floor
1.0m	Waist-deep for an adult
0.5m	Knee-deep for an adult

Areas at risk of house collapse due to riverbank erosion and floodwater

凡	例
	Evacuation site
	Designated emergency evacuation sites
	Welfare shelters
	Facility for people with special needs
	Expressway
	National Highway
	prefectural road
	Hazardous areas during torrential rain disasters (underpasses)
	Water level observation station
	Drainage Pump Station
	Camera
	Meiwa Town Hall
	Police Substation
	Fire Brigade Guardhouse
	Medical institution
	Other landmarks

Flood inundation assumption area map: Yata River, etc. (East)

Flood inundation assumption area map: Yata River, etc. (East)

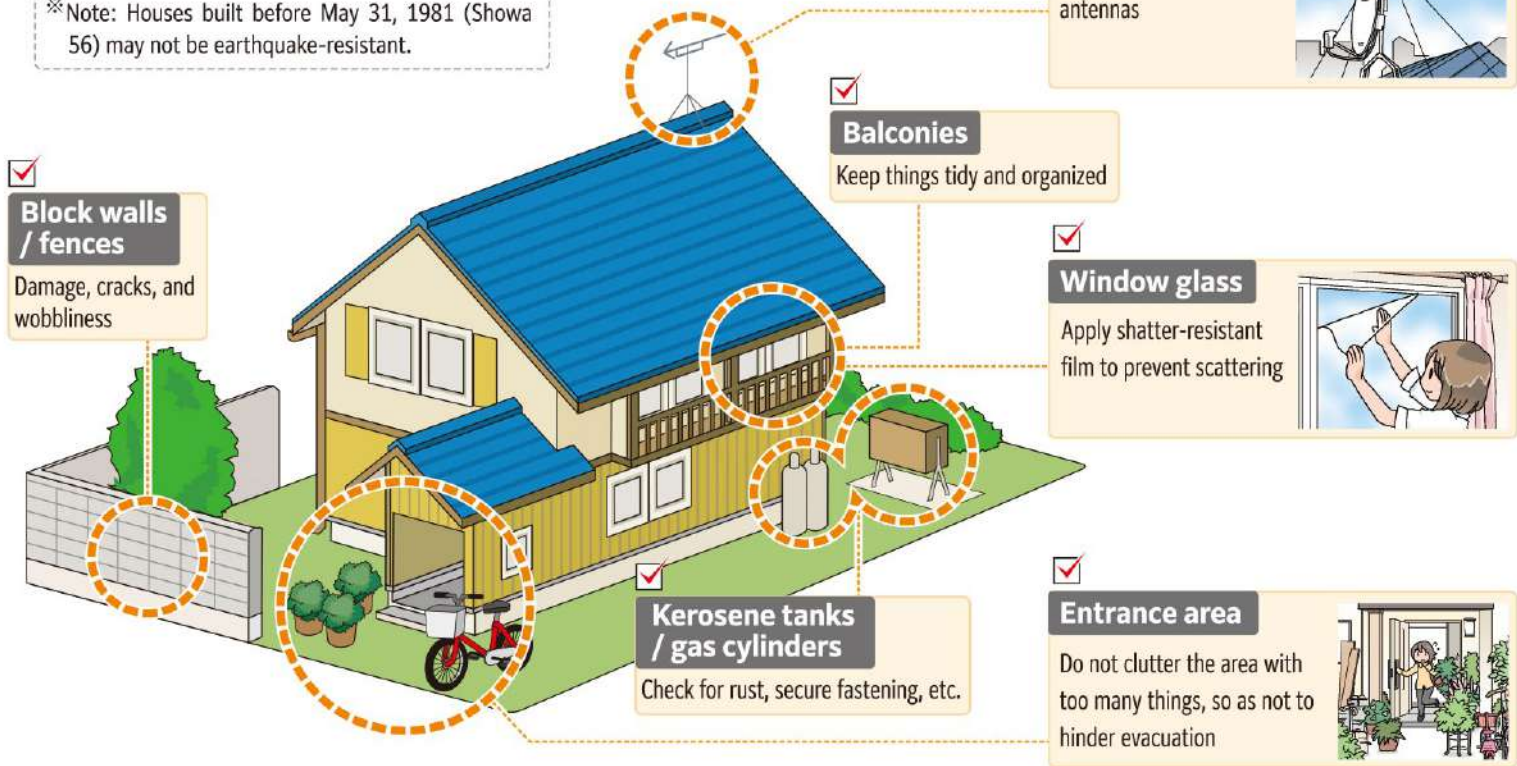
Earthquake disasters

Large earthquakes have been occurring frequently in Japan in recent years. Unlike storms or floods, earthquakes are almost impossible to predict in advance, making daily preparedness vital.

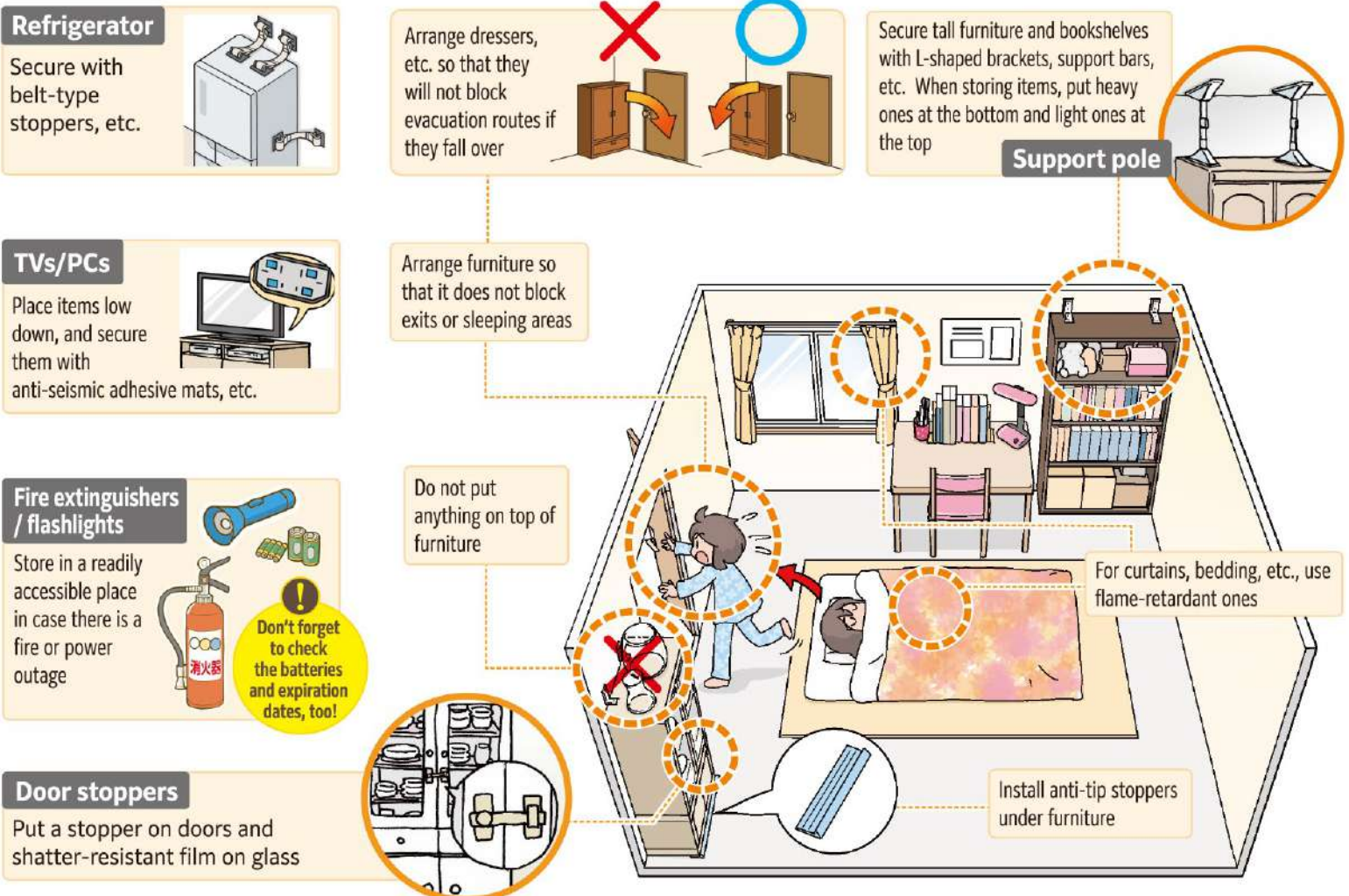
My home's earthquake preparedness checklist

Outdoors To reduce earthquake damage, inspect your own home's safety measures. If concerned about seismic resistance, do a seismic assessment,* and carry out reinforcement work, etc. as needed.

*Note: Houses built before May 31, 1981 (Showa 56) may not be earthquake-resistant.



Indoors Many injuries in earthquakes are caused by furniture, etc. falling over, and indoor clutter can also stop people from getting out in time. Review your furniture placement and securing methods, and put effort into safety measures.



Earthquakes expected in Gunma Prefecture Results of the Gunma Prefecture Earthquake Damage Assessment Survey

Information on the expected damage, etc. from earthquakes in Gunma Prefecture can be found on the website below.

<https://www.pref.gunma.jp/page/8133.html>



⚠️ Actions when an earthquake occurs

When an earthquake occurs, protecting yourself is the top priority. Make sure you are prepared to make appropriate decisions and take the necessary actions, in accordance with your location. Even after the shaking stops, be on the alert for secondary damage such as fires.

From the onset of an earthquake
1 min or more

First and foremost, "protect yourself"!!

If you feel a strong tremor or get an emergency earthquake alert, first protect yourself, then wait until the shaking stops, doing so in accordance with your surroundings.



■ If indoors

- Get under a table or desk
- Protect your head with a cushion, magazine, etc.
- Stay away from furniture and glass



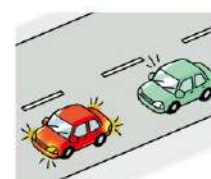
■ If out and about

- Watch out for falling objects such as signboards and glass
- Follow the staff's instructions
- If in an elevator, press all the floor buttons and exit at the first stop



■ If driving

- Turn on your hazard lights, gradually slow down, and park on the left side
- Gather information via the car radio, etc.
- When leaving the vehicle, leave the key in it, do not lock it, and leave your contact information



From the onset of an earthquake
1-5 min

"Secure safety" and "check your surroundings"!!

Once the shaking stops, act calmly. Make sure your surroundings are safe and check the situation. If an evacuation order has been issued or there is a risk of your house collapsing, etc., evacuate immediately.



■ Check for fire hazards

Check sources of fire such as stoves, gas appliances, heaters, and cigarettes to prevent fires

■ Secure an exit

Open doors and windows to prevent them from jamming if the building gets distorted

■ Check your surroundings

Watch out for broken glass and toppled furniture, and check the safety of the surroundings

■ Obtain information

Get accurate disaster and evacuation information from the TV, radio, etc.

From the onset of an earthquake
5 min to several hours

"Work together as a community"!!

While watching out for aftershocks, check on people's safety, and if there is damage, cooperate with your neighbors.

- Assist people who need help (the elderly, people with disabilities, the sick, pregnant women, etc.)
- Stay away from dangerous areas
- Check for missing people
- Rescue the injured and give them first aid
- Perform initial fire suppression if a fire occurs



How to use a fire extinguisher

- Hook a finger into the safety pin and pull it upward
- Remove the hose and point it at the fire source (hold the nozzle if possible)
- Squeeze the lever firmly to discharge the extinguisher, aiming at the fire source, not smoke or flames

Caution! Beware of re-ignition from residual heat

Caution! Avoid placing them in sunny or humid places

Fill this in while checking the disaster/emergency evacuation sites and contact details together with your family. Also, disasters can make it difficult to reach people by phone, so learn how to use the "Disaster Message Dial" below, too.

My home's disaster prevention notes				
My home's evacuation site			My home's meeting point	
Family members' contact details	Family member's name	Date of birth	Blood type	Notes (Medical conditions and history, cell phone number, workplace, etc.)
		MMM, DD, YYYY	Type Rh factor (+/-)	
		MMM, DD, YYYY	Type Rh factor (+/-)	
		MMM, DD, YYYY	Type Rh factor (+/-)	

Who to contact in an emergency Write the contact details for relatives, acquaintances, out-of-town evacuation sites, etc.

Name	Phone No.	Address	Other
		〒	
		〒	

Contact details for relevant organizations

- Government agencies**
- Meiwa Town Hall 0276-84-3111
 - Tatebayashi Administration and Prefectural Tax Office 0276-72-4415
 - Tatebayashi Health and Welfare Office 0276-72-3230
 - Tatebayashi Civil Engineering Office 0276-72-4355
 - Tone River Upper Stream River Office 048-563-1992
 - Watarase River Office 0284-73-5551

- Other relevant organizations**
- Firefighting 119
 - Police 110
 - Tobu Railway Kawamata Station 0276-84-2154
 - Tatebayashi Kosei General Hospital 0276-72-3140
 - Ota Memorial Hospital 0276-55-2200
 - Maebashi Red Cross Hospital 027-265-3333
 - Hanyu General Hospital 048-562-3000

Primary medical care provider:

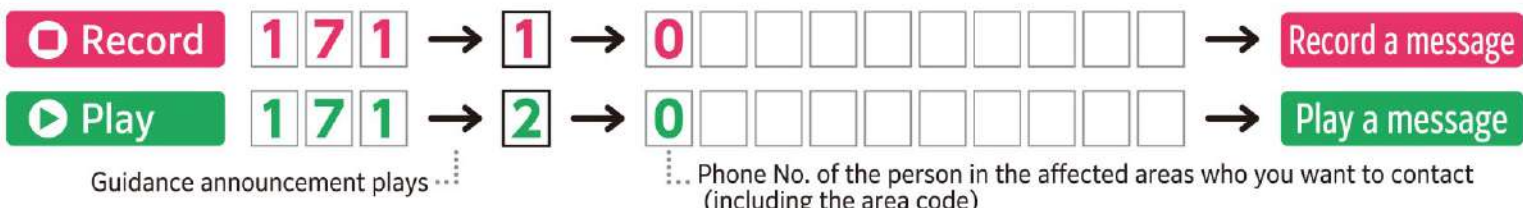
Ways to let family and acquaintances information about your safety, etc.

Disaster Message Dial **171**

If a large-scale disaster occurs, this "voice message board" will let you record and play messages so that you can contact family, other relatives, and acquaintances in the affected areas even if the phone lines are congested due to safety-checking calls, etc.

For more details, see the NTT website 

171 or NTT  search



Cell phone disaster message board 

This is a disaster message board provided by cell phone carriers in the event of a large-scale disaster. You can register and check information about safety using a cell phone or smartphone.

※Note: For more details, please check your cell phone carrier's website, etc.

**Crisis Management Section,
General Affairs Division,
Meiwa Town**

Nissato 250-1, Meiwa Town,
Ora County, Gunma Prefecture,
〒370-0795
Tel.: 0276-84-3111 (main)
Fax: 0276-84-3114

Website 

LINE 

Official X account 

Disaster prevention hazard maps in foreign languages 